The background of the slide features a traditional Indigenous Australian artwork. It depicts a large, stylized bird, possibly a magpie, with its wings spread, standing on a yellow ground. The bird's body and wings are filled with intricate patterns of dots and lines. Surrounding the bird are several circular motifs, some with concentric circles and others with a central dot, all set against a dark background with a grid of small squares. The text 'Kabi Kabi People's' is written in a stylized, outlined font at the top, and 'Corporation' is written in a similar font below it.

Kabi Kabi People's

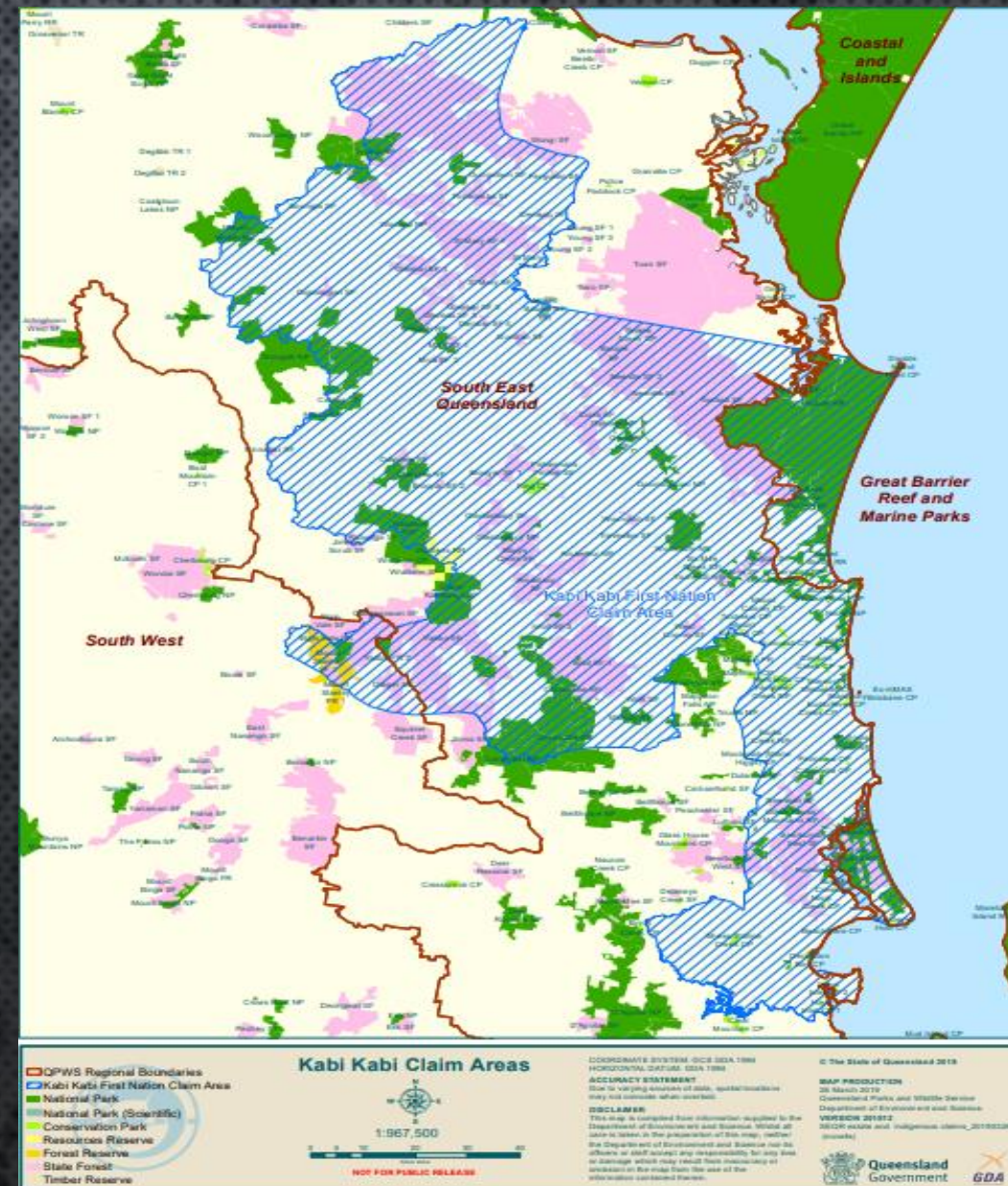
KABI KABI DREAMING TOURS

Corporation

BUILDING KABI KABI PRESCRIBE BODY
CORPORATE AND THE TOURISM CAPABILITY

NATIONAL

PARKS



PARTICIPATION AND MANAGEMENT

- MANY ABORIGINAL PEOPLE RESENT HAVING TO HAVE A PERMIT TO VISIT NATIONAL PARKS ESPECIALLY WHERE THEY HAVE HISTORICAL ASSOCIATIONS WITH LAND.
- THEY ALSO COMPLAIN ABOUT THE CURRENT NEGLECT OF MAINTENANCE OF ACCESS TRACKS BY CURRENT PARK MANAGERS.

KABI KABI

- ACCESS;
- PEOPLE & PLACE – CONNECTION;
- CARING FOR COUNTRY- TANGIBLE AND INTANGIBLE CULTURAL HERITAGE – TRADITIONAL ECOLOGICAL KNOWLEDGE;
- EMPLOYMENT & EDUCATION;
- LOCATION & LIFESTYLE;
- FAMILY ENVIRONMENT; AND
- TOURISM.

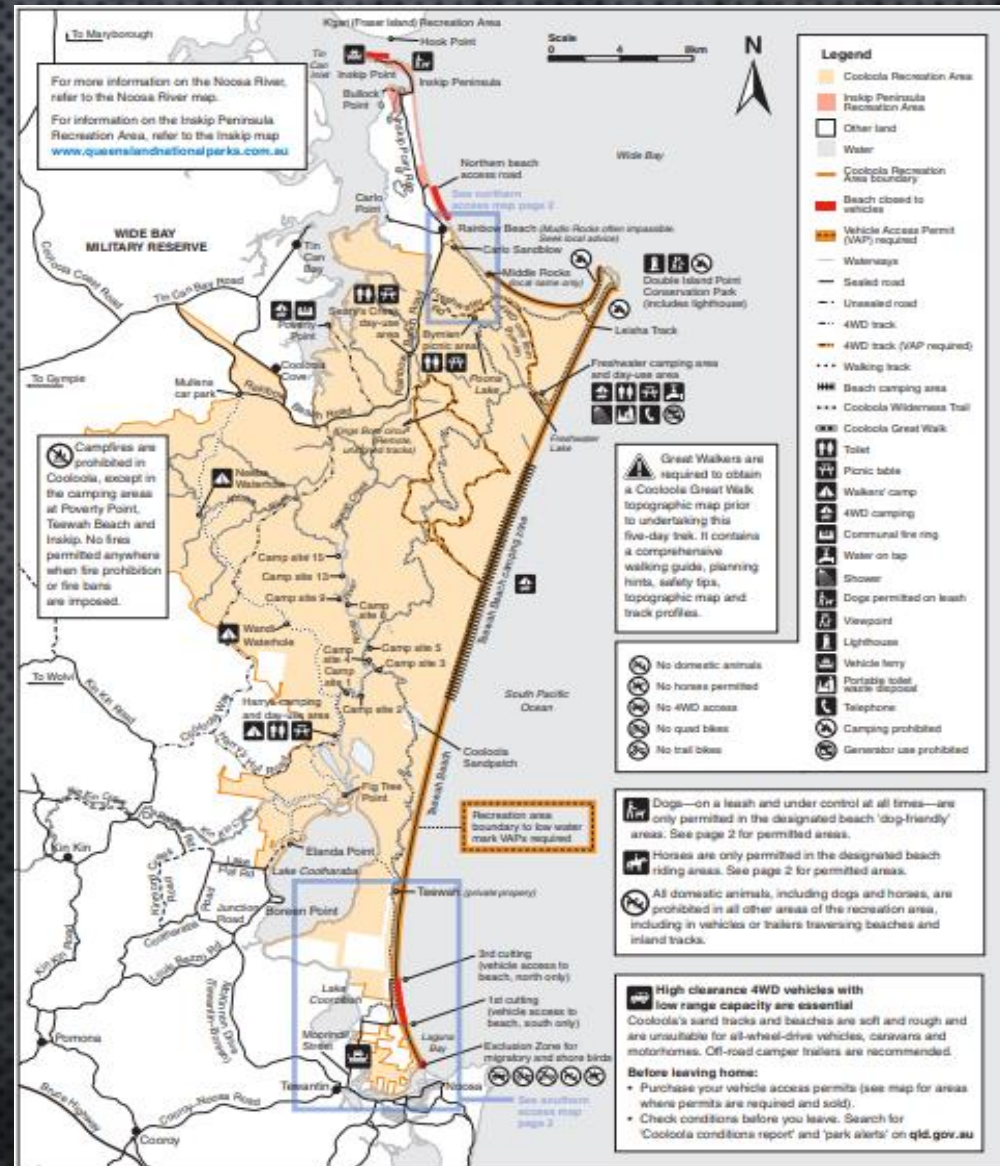




INVOLVEMENT

- INVOLVE THE APPROPRIATE PEOPLE FROM THE AREA IN THE CULTURAL COMPONENT OF THE TOURISM SCRIPTING;
- INCLUDE INVOLVEMENT IN DECISION MAKING;
- PROVIDE EMPLOYMENT IN LAND MANAGEMENT AND TOURISM VENTURES; AND
- BE SUPPORTED BY FUNDING AND RESOURCES TO ESTABLISH ORGANISATION INFRASTRUCTURE, INFORMATION AND COMMUNICATION STRATEGIES AND TRAINING.

COOLOOLA RECREATION AREA



ONGOING MANAGEMENT, MAINTENANCE AND PROTECTION

- LAND AND CULTURE ARE INSEPARABLE;
- CULTURAL HERITAGE INCLUDES MAINTENANCE AND USE OF PARKS RESOURCES AS WELL AS LOOKING AFTER SPECIAL PLACES AND PARTICULAR LANDSCAPES; AND
- IT IS APPROPRIATE AND EFFICIENT FOR ABORIGINAL PEOPLE TO BE INVOLVED IN AN ONGOING WAY IN PARKS MANAGEMENT DECISIONS RATHER THAN BEING CONSULTED IN A PIECEMEAL FASHION ONLY AT THE LAST MINUTE.

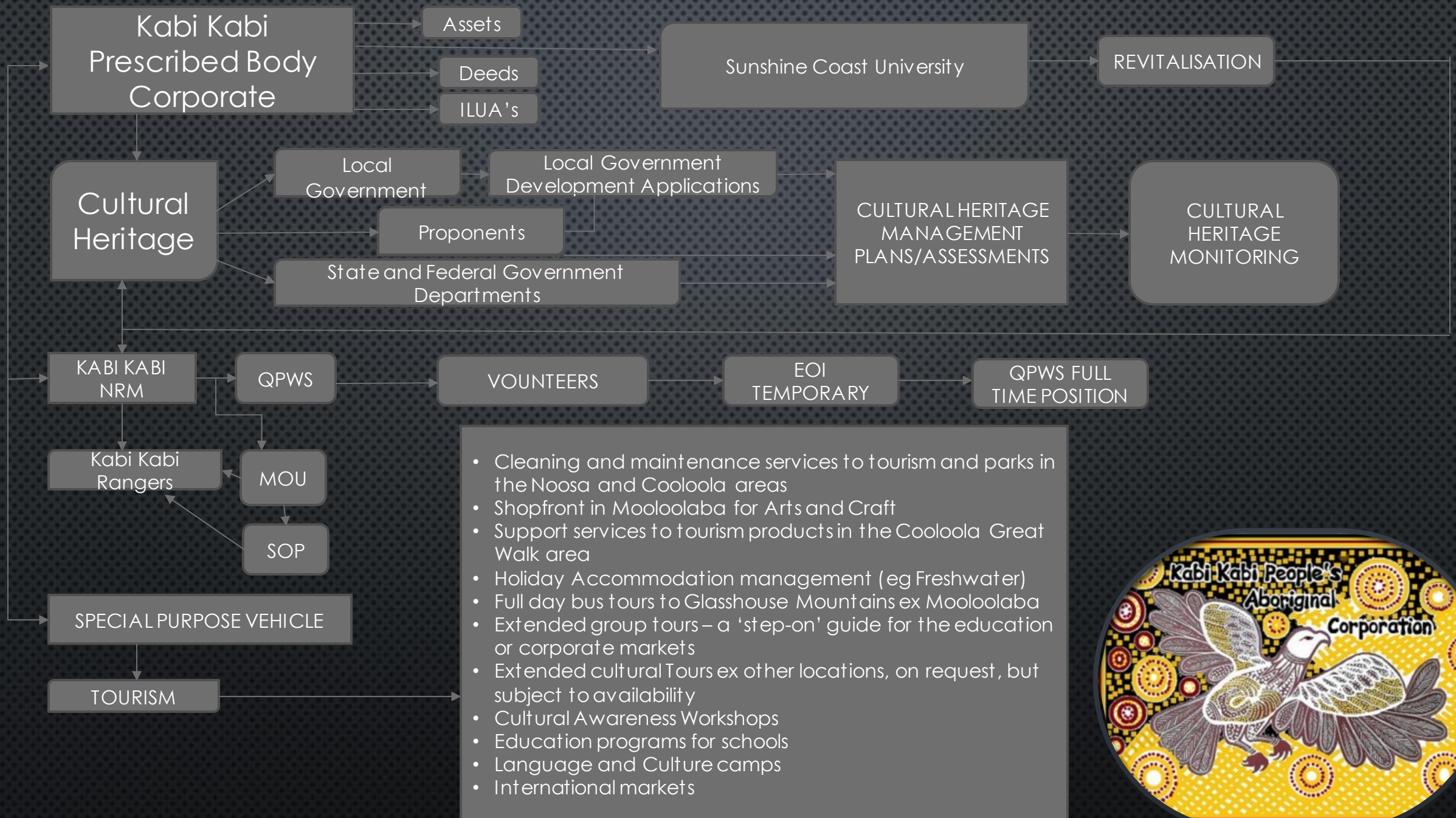


ACCESS TO APPLY CULTURAL TRADITIONS AND TOURISM

- CULTURAL PURPOSES (MEN'S AND WOMEN'S BUSINESS);
- SPIRITUAL CEREMONIES;
- VISITS TO SITES (INCLUDING HISTORIC CAMP SITES);
- TEACHING YOUNG PEOPLE;
- GATHERING RESOURCES (WOOD, STONE, PLANTS, MEDICINE PLANTS ETC); AND
- FISHING AND HUNTING.

MECHANISMS AND PROTOCOLS

- ESTABLISHMENT OF A HEAD COMPANY AND TOURISM ORGANISATION;
- ENSURES THAT PARKS ARE COMMUNICATING WITH THE RIGHT PEOPLE;
- WE SEEK TO HAVE A JOINT MANAGEMENT ARRANGEMENT AND TO EITHER PARTNER OR MANAGE TOURISM VENTURES; AND
- TO CEMENT AGREEMENT WITH STATE AUTHORITIES AND APPROPRIATE BUSINESSES.



WHERE TO FROM HERE?

**HOW DO WE ACHIEVE
BUSINESS SUCCESS?**



Kabi People's
Aboriginal
Corp

SOCIAL SUSTAINABILITY

Social Sustainability is a process or framework that promotes wellbeing within an organisation's own members while also supporting the ability of future generations to maintain a healthy community

RECONCILIATION INVESTMENT SUPPORT NETWORK (RISN)

- Formal structure designed to capture the diversity of investors across all levels of government, industry, private sector and Kabi Kabi.
- Brings local council and local businesses into the same network for the benefit of Kabi Kabi





